
SB-244-1J64

**Industrial Fanless PC w/Intel® Elkhart Lake
Celeron J6412 Processor**

User's Manual

Version 1.0

CE



2024.07

Revision History

Version	Date	Description
1.0	2024.07	Initial release

Revision History	ii
Contents	i
Preface.....	iii
Copyright Notice	iii
Declaration of Conformity	iii
CE.....	iii
FCC Class A	iii
RoHS	iv
SVHC / REACH	iv
Important Safety Instructions	v
Warning.....	vi
Lithium Battery Replacement.....	vi
Technical Support	vi
Warranty.....	vii
Chapter 1 - Introduction.....	1
1.1. Features.....	2
1.2. About this Manual	2
1.3. Specifications.....	3
1.4. Inside the Package	5
Chapter 2 - Getting Started.....	6
2.1. Dimensions	7
2.2. Overview	8
2.2.1. Front and Rear side View	8
2.2.2. DC-IN Power Input.....	9
2.2.3. HDMI/DP Output.....	9
2.2.4. Serial Port Connector(COM1, COM2).....	10
2.2.5. USB Port	10
2.2.6. LAN Port	11
2.2.7. Audio Connector	11
2.2.8. Power LED Status	11
2.2.9. Antenna Hole	12
2.2.10. 8DI-8DO	12
2.3. Internal Connector / Jumper	17
2.3.1. Clear CMOS	18
2.3.2 AT/ATX Selection Jumper(JP23)	18
2.3.3. JFP1 Pin definition(PIN 2.0)	19
2.3.4. JGPIO Jump	19
Chapter 3 - Engine of the Computer.....	23
3.1. Installation and Maintenance	24
3.2. Install M.2 2242 Storage/Thermal Pad	25

- 3.3. Install/Remove HDD26
- 3.4. Install/Remove WIFI / 4G module and SIM card.....27
- Chapter 5 - BIOS29**
- 4.1. Main - Sets system Time & Date..... 32
- 4.2. Advanced 33
 - 4.2.1. Turbo Mode Setting 34
 - 4.2.2. COM Mode Setting 35
- 4.3 USB Power Setting in Power Off / Hibernation Mode 37
- 4.4. GPIO Setting 38
- 4.5. Auto TURN-ON (AT/ATX)..... 39
- 4.6. Security 40
- 4.7. Boot..... 41
- 4.8. Setting the Boot Logo 42
- 4.9. Setting Boot Option Priority..... 43
- 4.10. Save & Exit 44

Copyright Notice

All Rights Reserved.

The information in this document is subject to change without prior notice in order to improve the reliability, design and function. It does not represent a commitment on the part of the manufacturer.

Under no circumstances will the manufacturer be liable for any direct, indirect, special, incidental, or consequential damages arising from the use or inability to use the product or documentation, even if advised of the possibility of such damages.

This document contains proprietary information protected by copyright. All rights are reserved. No part of this document may be reproduced by any mechanical, electronic, or other means in any form without prior written permission of the manufacturer.

Declaration of Conformity

CE

The CE symbol on your product indicates that it is in compliance with the directives of the Union European (EU). A Certificate of Compliance is available by contacting Technical Support.

This product has passed the CE test for environmental specifications when shielded cables are used for external wiring. We recommend the use of shielded cables. This kind of cable is available from ARBOR. Please contact your local supplier for ordering information.

Warning

This is a class A product. In a domestic environment this product may cause radio interference in which case the user may be required to take adequate measures.

FCC Class A

This device complies with Part 15 of the FCC Rules. Operation is subject to the following two conditions:

- (1) This device may not cause harmful interference, and
- (2) This device must accept any interference received, including interference that may cause undesired operation.

NOTE:

This equipment has been tested and found to comply with the limits for a Class A digital device, pursuant to Part 15 of the FCC Rules. These limits are designed to provide reasonable protection against harmful interference when the equipment is operated in a commercial environment. This equipment generates, uses, and can radiate radio frequency energy and, if not installed and used in accordance with the instruction manual, may cause harmful interference to radio communications. Operation of this equipment in a residential area is likely to cause harmful interference in which case the user will be required to correct the interference at his own expense.

RoHS

ARBOR Technology Corp. certifies that all components in its products are in compliance and conform to the European Union's Restriction of Use of Hazardous Substances in Electrical and Electronic Equipment (RoHS) Directive 2002/95/EC.

The above mentioned directive was published on 2/13/2003. The main purpose of the directive is to prohibit the use of lead, mercury, cadmium, hexavalent chromium, polybrominated biphenyls (PBB), and polybrominated diphenyl ethers (PBDE) in electrical and electronic products. Member states of the EU are to enforce by 7/1/2006.

ARBOR Technology Corp. hereby states that the listed products do not contain unintentional additions of lead, mercury, hex chrome, PBB or PBDB that exceed a maximum concentration value of 0.1% by weight or for cadmium exceed 0.01% by weight, per homogenous material. Homogenous material is defined as a substance or mixture of substances with uniform composition (such as solders, resins, plating, etc.). Lead-free solder is used for all terminations (Sn(96-96.5%), Ag(3.0-3.5%) and Cu(0.5%)).

SVHC / REACH

To minimize the environmental impact and take more responsibility to the earth we live, Arbor hereby confirms all products comply with the restriction of SVHC (Substances of Very High Concern) in (EC) 1907/2006 (REACH --Registration, Evaluation, Authorization, and Restriction of Chemicals) regulated by the European Union.

All substances listed in SVHC < 0.1 % by weight (1000 ppm)

Important Safety Instructions

Read these safety instructions carefully

1. Read all cautions and warnings on the equipment.
2. Place this equipment on a reliable surface when installing. Dropping it or letting it fall may cause damage
3. Make sure the correct voltage is connected to the equipment.
4. For pluggable equipment, the socket outlet should be near the equipment and should be easily accessible.
5. Keep this equipment away from humidity.
6. The openings on the enclosure are for air convection and protect the equipment from overheating. **DO NOT COVER THE OPENINGS.**
7. Position the power cord so that people cannot step on it. Do not place anything over the power cord.
8. Never pour any liquid into opening. This may cause fire or electrical shock.
9. Never open the equipment. For safety reasons, the equipment should be opened only by qualified service personnel.
10. If one of the following situations arises, get the equipment checked by service personnel:
 - a. The power cord or plug is damaged.
 - b. Liquid has penetrated into the equipment.
 - c. The equipment has been exposed to moisture.
 - d. The equipment does not work well, or you cannot get it to work according to the user's manual.
 - e. The equipment has been dropped or damaged.
 - f. The equipment has obvious signs of breakage.
11. Keep this User's Manual for later reference.

Warning

The Box PC and its components contain very delicately Integrated Circuits (IC). To protect the Box PC and its components against damage caused by static electricity, you should always follow the precautions below when handling it:

1. Disconnect your Box PC from the power source when you want to work on the inside.
2. Use a grounded wrist strap when handling computer components.
3. Place components on a grounded antistatic pad or on the bag that came with the Box PC, whenever components are separated from the system.

Lithium Battery Replacement

Incorrect replacement of the lithium battery may lead to a risk of explosion.

The lithium battery must be replaced with an identical battery or a battery type recommended by the manufacturer.

Do not throw lithium batteries into the trash can. It must be disposed of in accordance with local regulations concerning special waste.

Technical Support

If you have any technical difficulties, please consult the user's manual first at:
<https://www.arbor-technology.com>

Please do not hesitate to call or e-mail our customer service when you still cannot find out the answer.

<https://www.arbor-technology.com>

E-mail: info@arbor.com.tw

Warranty

This product is warranted to be in good working order for a period of two year from the date of purchase. Should this product fail to be in good working order at any time during this period, we will, at our option, replace or repair it at no additional charge except as set forth in the following terms. This warranty does not apply to products damaged by misuse, modifications, accident or disaster.

Vendor assumes no liability for any damages, lost profits, lost savings or any other incidental or consequential damage resulting from the use, misuse of, or inability to use this product. Vendor will not be liable for any claim made by any other related party.

Vendors disclaim all other warranties, either expressed or implied, including but not limited to implied warranties of merchantability and fitness for a particular purpose, with respect to the hardware, the accompanying product's manual(s) and written materials, and any accompanying hardware. This limited warranty gives you specific legal rights.

Return authorization must be obtained from the vendor before returned merchandise will be accepted. Authorization can be obtained by calling or faxing the vendor and requesting a Return Merchandise Authorization (RMA) number. Returned goods should always be accompanied by a clear problem description.

This page is intentionally left blank.

Chapter 1

Introduction

1.1. Features

- Intel® Celeron® J6412 CPU Elkhart Lake(2.0 GHz/2.6GHz)
- 1 x SDRAM DDR4 3200 MHz (max. 32G)
- Support 4 Gigabit LAN
- Support DP/HDMI video output
- Support SATA/M.2 SSD, M.2 WiFi, Mini-PCIe

1.2. About this Manual

This manual is meant for the experienced users and integrators with hardware knowledge of personal computers. If you are not sure about the description in this manual, consult your vendor before further handling.

We recommend that you keep one copy of this manual for the quick reference for any necessary maintenance in the future. Thank you for choosing ARBOR products.

1.3. Specifications

System	
CPU	Intel® Celeron® J6412 CPU Elkhart Lake (2.0 GHz/2.6GHz)
Memory	1 x SDRAM DDR4 3200 MHz SO-SIMM slot (max. 32G) 4GB DDR4 SO-DIMM pre-installed*(CTOS)
Graphics	Intel® UHD Graphics for 10 th Gen Intel® Processors
LAN Chipset	1 x Intel I210AT GbE controller 3 x Intel I226-V 2.5GbE controllers
Watchdog Timer	Programmable 255 levels timer interval, from 1~255 sec/min
Audio	
Type	1 x Audio(Line-out & Mic-in) Chip 888S/897
Storage	
Device	1 x SATA 3.1 (2.5" HD)
	1 x M.2 2242 (SATA3.0)
	128GB M.2 SSD pre-installed*(CTOS)
External I/O	
Serial Ports	2 x RS232/RS422/RS485 (default RS-232) with auto flow control 2 x RS485 2 x RS232 (optional by internal pin head)
USB Ports	2 x USB3.1 4 x USB2.0 1 x USB2.0 (for security dongle)
LAN	4 x RJ45
Video Ports	1 x HDMI up to 4096 x 2160 @ 24 Hz 1 x DP up to 4096 x 2160 @ 60 Hz
GPIO Remote	1 x 8bit programmable GPIO (default 3.3V, 5V optional) (optional by internal pin head)
Remote	1 x SW
Indicators	1 x Power LED (Green for Power-on, Blink for Sleep mode, Off for Power-off)

Internal I/O	
Expansion Slot	1 x Mini-PCIe slot (PCIe/ USB2.0 signal supported) 1 x E-Key M.2 2230 slot (PCIe/USB2.0 signal supported) 1 x M.2 2242 SSD slot(SATA signal supported)
SIM Card	1 x SIM Card socket for 3G/4G module
Mechanical	
Button	1 x Power button
Chassis	Aluminum Alloy
Dimension (W x H x D)	200 x 153 x 52.8 mm
Weight (Net)	1.5kg
Environmental	
Operating Temp.	-10 ~ 60°C (14 ~ 140°F)
Storage Temp.	-40 ~ 85°C (-40 ~ 185°F)
Operating Humidity	5% ~ 95% (non-condensing)
Random Vibration	5~500Hz, 2Grms operation
Shock	Operation: 10G@11ms Non-operation: 30G@11ms
ESD	Contact 6KV, Air 10KV
Qualification	
Certification	CE, FCC
Power System	
Power Input	12-24V DC, 2-pin phoenix connector
OS Support	
Windows 10 Ubuntu 20.04	

1.4. Inside the Package

Upon opening the package, carefully inspect the contents. If any of the items is missing or appears damaged, contact your local dealer or distributor. The package should contain the following items:



1 x SB-244-1J64



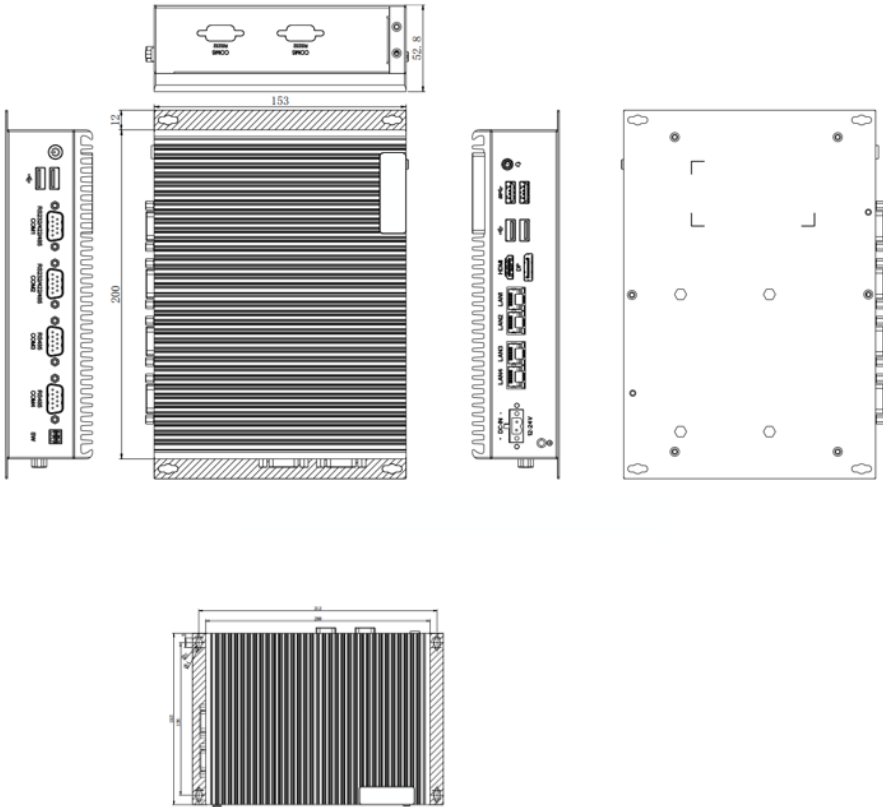
- User's manual
- 2 x 2-pin Terminal Block(3.5mm and 5mm)
- 1 x SATA cable
- 1 x M.2 2242 thermal pad
- 1 x Memory thermal pad
- 1 x Pan head screw M3*3
- 1 x I head screw
- 1 x Swrach18A screw

This page is intentionally left blank.

Chapter 2

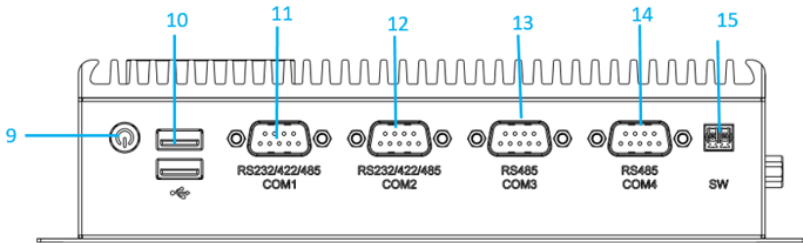
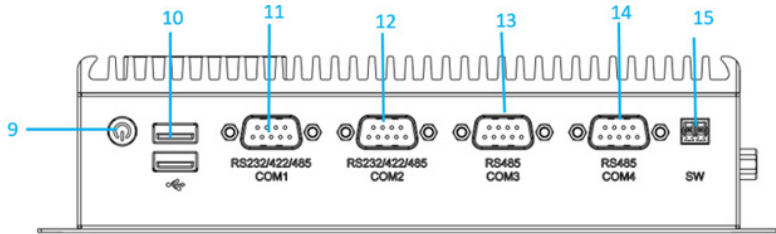
Getting Started

2.1. Dimensions



2.2. Overview

2.2.1. Front and Rear side View



Front Side Connector List

No.	Item	No.	Item
1	DC-IN	9	Power button
2	LAN3/4	10	USB 2.0
3	LAN1/2	11	COM1
4	HDMI	12	COM2
5	DP	13	COM3
6	USB2.0	14	COM4
7	USB3.0	15	SW
8	Audio		

2.2.2. DC-IN Power Input



Pin	Pin Definition	Pin	Pin Definition
1	+12~24V	2	GND

2.2.3. HDMI/DP Output

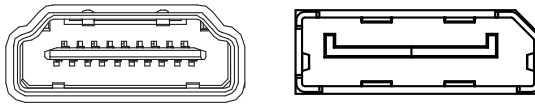


Figure 2.2.3-1 HDMI / DP Connector

2.2.4. Serial Port Connector(COM1, COM2)

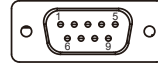
COM1, COM2

Function: RS-232/422/485 Selectable Serial Port

Connector Type: External 9-pin D-sub male connector

Pin Assignment:

	Pin	Desc.	Pin	Desc
RS-232	1	DCD	6	DSR
	2	RXD	7	RTS
	3	TXD	8	CTS
	4	DTR	9	RI
	5	GND		
RS-422	1	Tx-		
	2	Tx+		
	3	Rx+		
	4	Rx-		
	5	GND		
RS-485	1	Data-	4	NC
	2	Data+	5	GND
	3	NC		



Note: COM1/2 support RS232/422/485.

2.2.5. USB Port

Function: USB 3.1/3.0/2.0 Stacked Connectors

Connector Type: USB 3.0/2.0 type A connectors

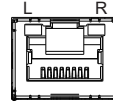
Pin Assignment: The pin assignments conform to the industry standard.

USB Ver.	Max Speed	Speed name	Max V/I
USB2.0		High-Speed	DSR 5V/0.5A
USB3.0	5Gbps(500MB/S)	Super-Speed USB	5V/900mA
USB3.1	10Gbps(1000MB/S)	Super-Speed USB	5V/900mA

Note: Support 4 x USB ports, 2 x USB3.1 and 2 x USB2.0

2.2.6. LAN Port

- Function:** RJ-45 port for Giga Lan
- Connector Type:** 4 x RJ-45 connectors that support 10/100/1000Mbps fast Ethernet
- Pin Assignment:** The pin assignments conform to the industry standard.

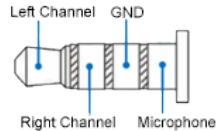


LED Indicators

Indicator	Function	Status
L	Networking Status	Off: not working Green: Working
R	Networking Speed Status	Off: 10Mbps Green: 100Mbps Orange: 1000Mbps

2.2.7. Audio Connector

- Function:** For external microphone, headphones or speakers.
- Connector Type:** 3.5mm audio port interface
- Pin Assignment:** Support a 2-in-1 audio I/O interface with a 3.5mm hole diameter for external microphones, headphones, or speakers on a 4-segment iPhone version devices.



Note: As the microphone pins of Android and iPhone version devices are opposite, they cannot be used the same audio input/output ports.

2.2.8. Power LED Status

Description	Status
Power LED Status	Off: Power off or system is in hibernate mode Green LED permanently: System is working

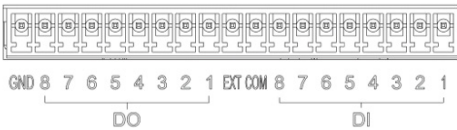


2.2.9. Antenna Hole

There are 2 antenna reserved holes on the rear panel of the product to facilitate users to install the antenna of the wireless module.



2.2.10. 8DI-8DO



DO Ports Definition

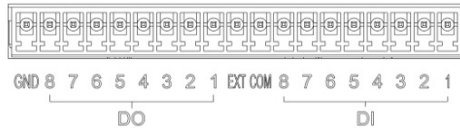
Pin	Item	Description
1	DO_GND	External power supply(-)
2	DO8	Export with isolated 8
3	DO7	Export with isolated 7
4	DO6	Export with isolated 6
5	DO5	Export with isolated 5
6	DO4	Export with isolated 4
7	DO3	Export with isolated 3
8	DO2	Export with isolated 2
9	DO1	Export with isolated 1
10	Pext_VDD	External power supply(+)(5-24V)

DI Ports Definition

Pin	Item	Description
11	DI_COM	Import with isolated
12	DI8	Import with isolated 8
13	DI7	Import with isolated 7
14	DI6	Import with isolated 6
15	DI5	Import with isolated 5
16	DI4	Import with isolated 4
17	DI3	Import with isolated 3
18	DI2	Import with isolated 2
19	DI1	Import with isolated 1

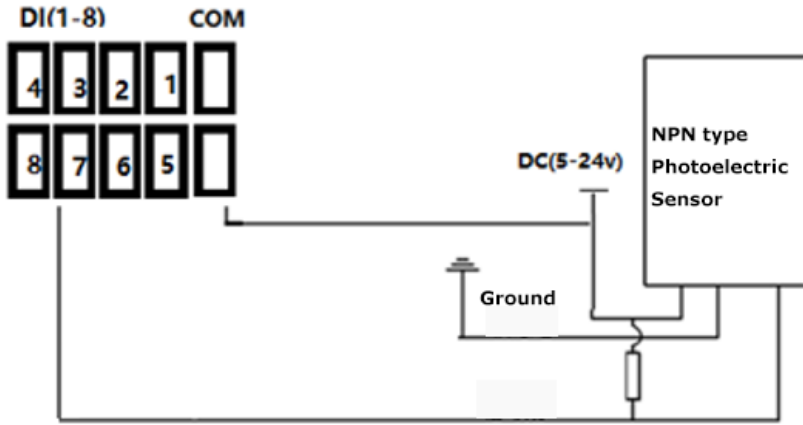
2.2.10.1. Input/Output design

Features: Compatible with PNP and NPN sensor input, input voltage is DC 5-24V



2.2.10.2. Input NPN wiring method

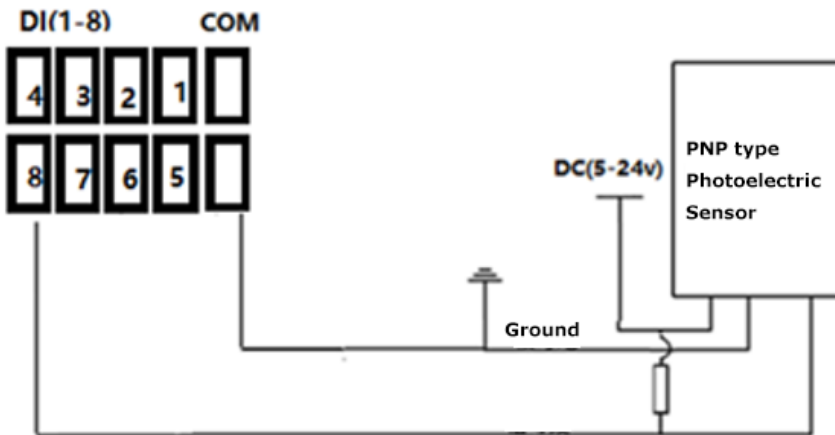
Features: NPN type equipment is connected to IO input, DI_COM is connected to NPN type sensor, the signal line is connected to DI(1-8), and the resistor is PULL HIGH on the signal line according to the requirements of the sensor.



NPN type Photoelectric Sensor wiring method

2.2.10.3. Input PNP wiring method

Features: PNP type device is connected to IO input, DI_COM is connected to GND of NPN type sensor, signal line is connected to DI (1-8), and resistor is PULL DOWN resistor on signal line according to sensor requirements.



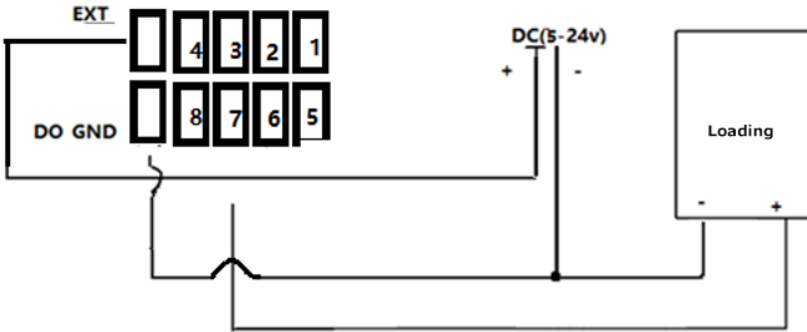
PNP type Photoelectric Sensor wiring method

2.2.10.4. Output Loading Method

Features: Designed to meet the power supply range of DC 5-24V, current driving capacity of each channel 100mA, programmable switching between NPN and PNP outputs, with reverse connection protection function. The wiring methods for connecting to loads (such as relays, LED lights, motors, etc.) and PLCs are shown below.

2.2.10.5. Export PNP wiring method

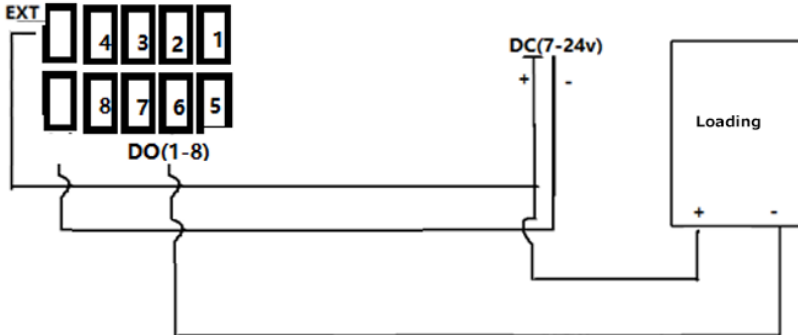
Features: DO connect to positive of loading, negative connect to DO_GND, and EXT connect external power.



Note: 1. If you need to connect an inductive load, please make sure there is a reverse discharge diode to prevent the reverse electromotive force from breaking down the internal parts.

2.2.10.6. Export PNP wiring method

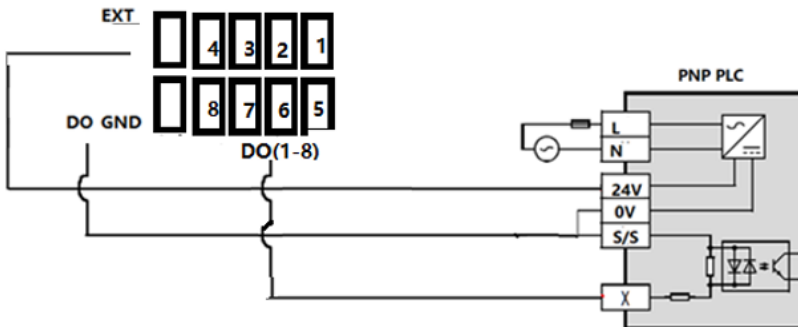
Features: DO is connected to the - side of the load, the + side of the load is connected to EXT, and EXT is connected to the external voltage.



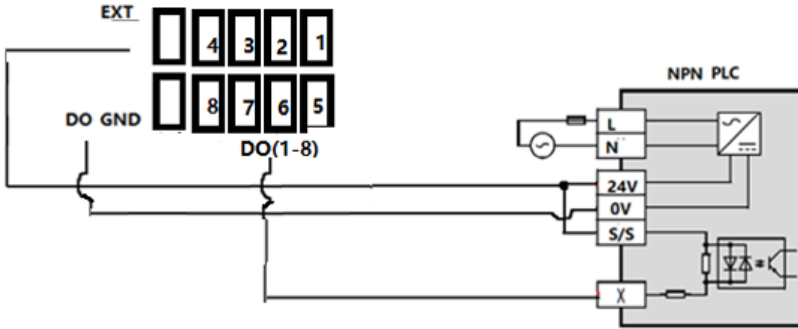
Note: 1. If you need to connect an inductive load, please make sure there is a reverse discharge diode to prevent the reverse electromotive force from breaking down the internal parts.

2.2.10.7. Export PLC wiring method

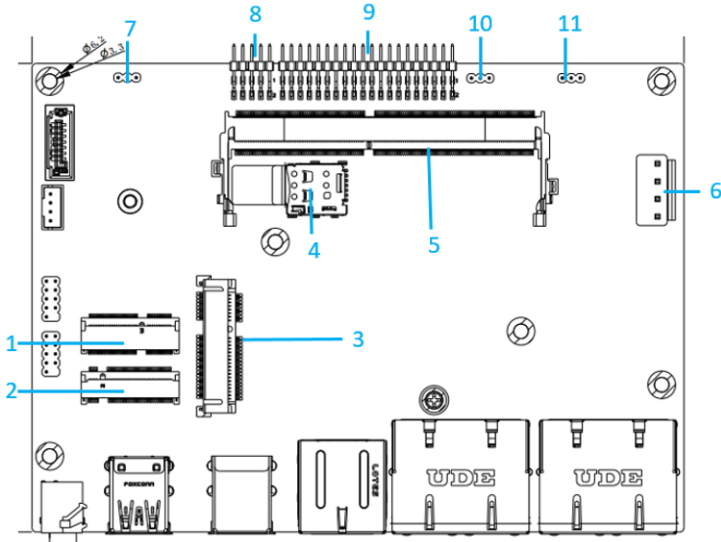
PNP PLC characteristics: VCC connects to EXT, DO_GND connects to PLC GND, and PLC input connects to DO1-8.



NPN PLC characteristics: PLC VCC connects to EXT, DO_GND connects to PLC GND, and PLC input connects to DO1-8.



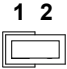
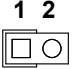
2.3. Internal Connector / Jumper



Pin	Pin Definition	Printing
1	M.2 2230	M.2_2230
2	M.2 2242	M.2_SSD
3	Mini-PCle Wi-Fi/4G module/CAN bus	MINIPCIE1
4	3G/4G SIM slot	JSIM1
5	DDR4 SO-DIMM slot	DIMM1
6	12-24 DC IN	JPWR1
7	AT/ATX selection mode	ATX_AT
8	Function Reset, LED, Power Button Pin Head	JFP1
9	COM Port	J3
10	GPIO voltage jumper	GPIO_V
11	Clear Cmos Jump	JCMOS1



2.3.1. Clear CMOS

Function: Clears/keeps CMOS
Jumper Type: 2.00 mm pitch 1x2-pin header
Setting:

Pin	Description	
Short 1-2	Clears CMOS	
Open 1-2	Keeps CMOS (default)	

2.3.2 AT/ATX Selection Jumper(JP23)

Function: AT/ATX selection mode
Setting:

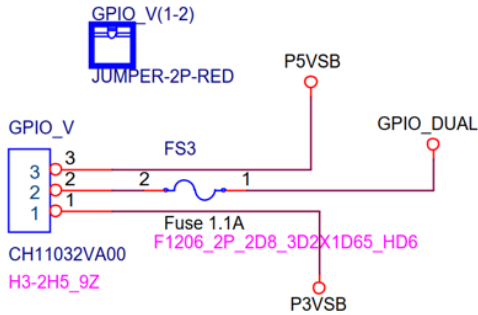
Pin	Description	
Short 1-2	AT Mode	
Short 2-3	ATX mode(default)	

2.3.3. JFP1 Pin definition(PIN 2.0)

Pin	Description	Pin	Description
1	NC	2	NC
3	PWR_SW	4	HWRST_N
5	GND	6	GND
7	PWR_LED-	8	SATA_LED-
9	PWR_LED+	10	SATA_LED+

2.3.4. JGPIO Jump

JGPIO Jump



JGPIO Definition

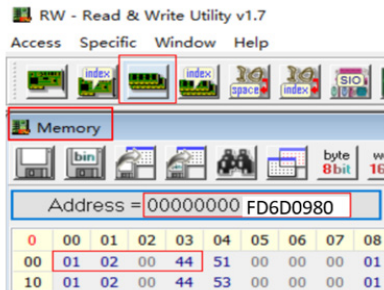
Pin	Pin Definition	Pin	Printing
1	GPIO_DUAL	2	GPIO_DUAL
3	JGPIO1	4	JGPIO8
5	JGPIO2	6	JGPIO7
7	JGPIO3	8	JGPIO6
9	JGPIO4	10	JGPIO5
11	GND	12	N/A

Note: Default setting is 3.3V, users is able to set to 5V.

Follow the table as below for the GPIO setting

Pin	GPIO Memory Address	GPI Setting	GPO Setting	GPO High Voltage	GPO Low Voltage
JGPIO1	0xFD6D0980	Bit 8=1 Bit 9=0	Bit 8=0 Bit 9=1	Bit 0=1	Bit 0=0
JGPIO2	0xFD6D0990	Bit 8=1 Bit 9=0	Bit 8=0 Bit 9=1	Bit 0=1	Bit 0=0
JGPIO3	0xFD6D09A0	Bit 8=1 Bit 9=0	Bit 8=0 Bit 9=1	Bit 0=1	Bit 0=0
JGPIO4	0xFD6D09B0	Bit8=1 Bit9=0	Bit8=0 Bit9=1	Bit 0=1	Bit 0=0
JGPIO5	0xFD6D0A10	Bit8=1 Bit9=0	Bit8=0 Bit9=1	Bit 0=1	Bit 0=0
JGPIO6	0xFD6D0A20	Bit8=1 Bit9=0	Bit8=0 Bit9=1	Bit 0=1	Bit 0=0
JGPIO7	0xFD6D0A30	Bit8=1 Bit9=0	Bit8=0 Bit9=1	Bit 0=1	Bit 0=0
JGPIO8	0xFD6D0A40	Bit8=1 Bit9=0	Bit8=0 Bit9=1	Bit 0=1	Bit 0=0

After opening the RW tool, select Memory Dump and fill in the JGPIO1 address value as FD6D0980.



- 32-bit memory address: fill in 0x44000201 for GPO1 High

0	00	01	02	03	04	05	06	07
00	00	02	00	44	51	00	00	00
10	01	02	00	44	53	00	00	00
20	01	02	00	44	55	00	00	00

- 0x44000200 represents GPO1 Low
- 03 position 44 represents GPIO voltage is 3.3V, 84 represents GPIO voltage is 5.0V
- 01 position 02 represents the GPIO pin is GPO state
- 01 position 01 represents the pin of GPIO is GPI state, GPI can only read, but not set.

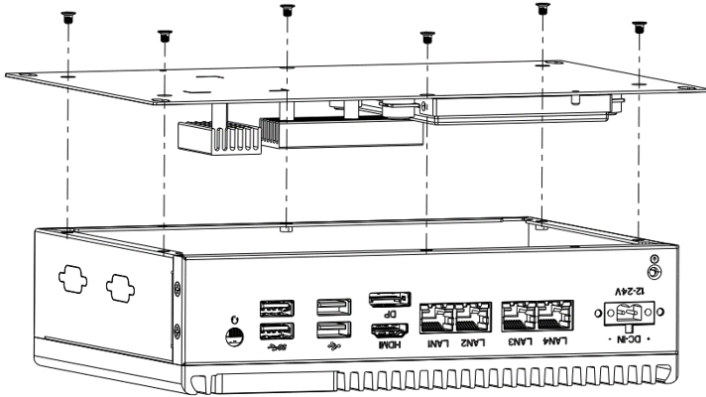
This page is intentionally left blank.

Chapter 3

Installation & Maintenance

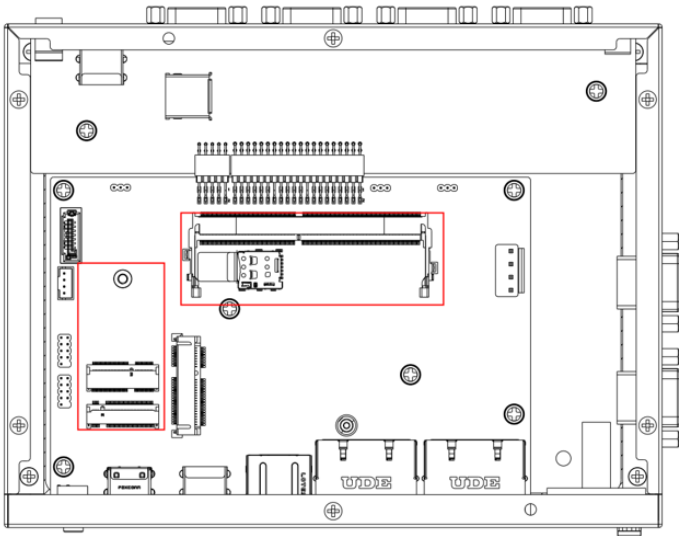
3.1. Installation and Maintenance

1. Remove 6 screws from the bottom cover, as shown as below.



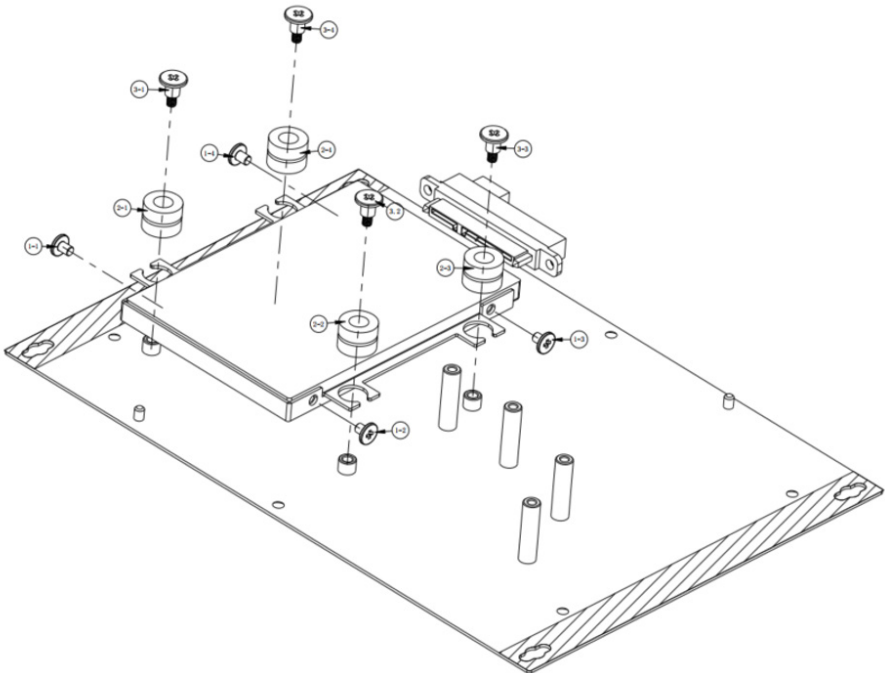
3.2. Install M.2 2242 Storage/Thermal Pad

1. Remove 7 screws on the bottom cover from the computer as described in 3.1-1
2. Install/Remove the storage from the slot and attach the thermal pad to the storage.
3. Attach the accessory hexagonal studs to the screw holes, insert/remove the storage. Fasten 6 screws of P-head M3, and attach the SSD thermal pad to the M.2 SSD.



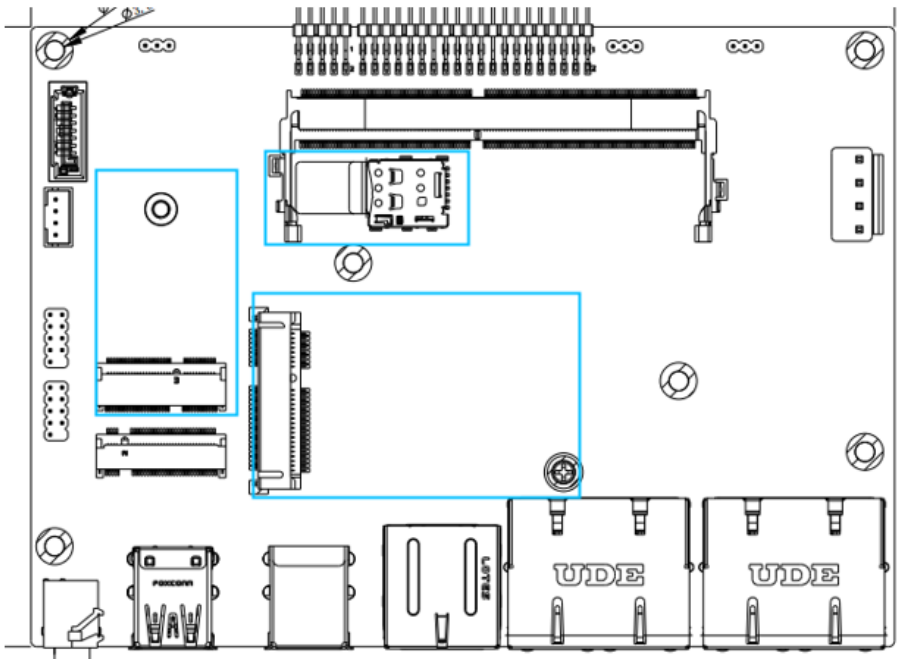
3.3. Install/Remove HDD

1. Remove six M3x4 screws and the bottom cover;
2. Place the HDD and bracket in the direction as shown in the figure, and secure them with four I-head M3*4 screws on the sides;
3. Insert four pieces of rubber into the groove of the bracket, and place the module on the bottom cover studs;
4. Use four screws to lock the module in sequence and fix it to the bottom cover studs;
5. Connect the HDD cable and the other end to the corresponding interface on the motherboard;
6. Install the bottom cover and lock it with 6 countersunk head M3x4 screws.



3.4. Install/Remove WIFI / 4G module and SIM card

1. Insert/remove the SIM card into the SIM card slot
2. Insert the MINI-PCIE interface into the /WIFI/CAN card/4G module and lock it with L-head M2*3 screws;
3. Fix the 6-corner studs of the accessory on the screw hole, connect the 2230 wireless network card to the M.2 2230 interface, and after installing the M.2 2242 SSD, tighten it with P-head M3*6 screws.



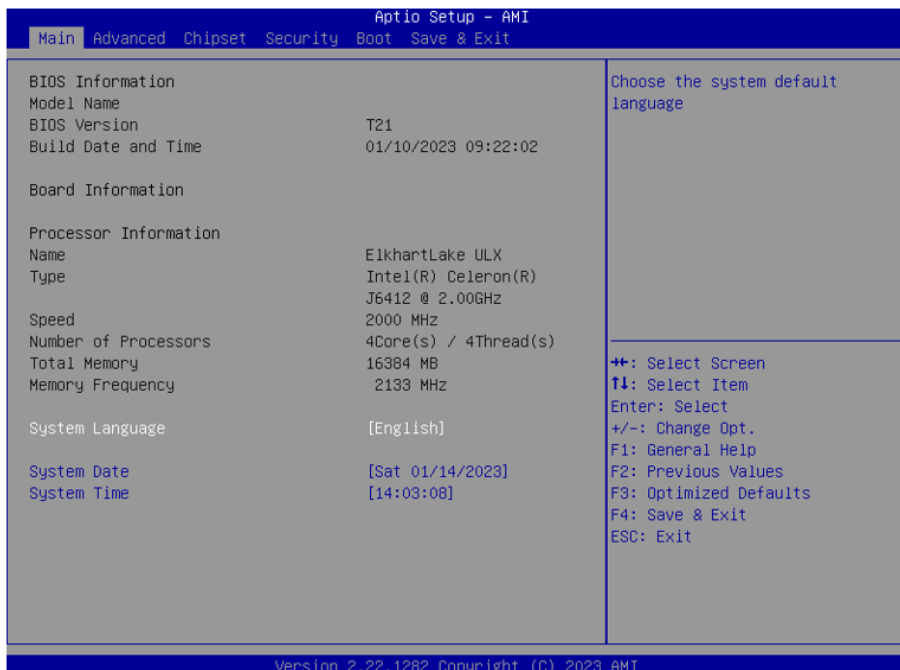
This page is intentionally left blank.

Chapter 4

BIOS

The BIOS Setup utility is featured by American Megatrends Inc to configure the system settings stored in the system's BIOS ROM. The BIOS is activated once the computer powers on. When the computer is off, the battery on the main board supplies power to BIOS RAM.

To enter the BIOS Setup utility, keep hitting the "Delete" key upon powering on the computer.



Note: Actual model name and board information varies according to your model.

Key Commands

The BIOS Setup utility relies on a keyboard to receive user’s instructions. Hit the following keys to navigate within the utility and use the utility.

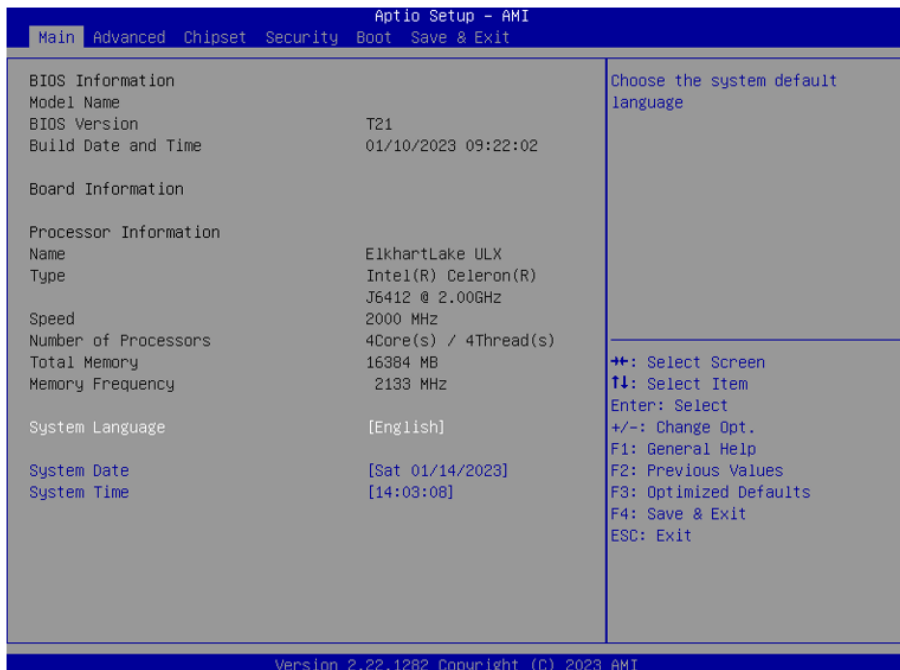
Keystroke	Function	
DEL	Enter the BIOS Setup menu	After System Open
F7	Enter the boot up sequence menu	
Ctrl + Alt + DEL	Restart the system	
← →	Moves left/right between the top menus.	In BIOS
↓ ↑	Moves up/down between highlight items.	
Enter	Selects an highlighted item/field.	
F3	Load defaults	
F4	Save the Settings and Quit the BIOS	
Esc	<ul style="list-style-type: none"> ▶ On the top menus: Use Esc to quit the utility without saving changes to CMOS. (The screen will prompt a message asking you to select OK or Cancel to exit discarding changes. ▶ On the submenus: Use Esc to quit current screen and return to the top menu. 	

Note: Pay attention to the “WARNING” that shows at the left pane onscreen when making any change to the BIOS settings.

This BIOS Setup utility is updated from time to time to improve system performance and hence the screenshots hereinafter may not fully comply with what you actually have onscreen.

4.1. Main - Sets system Time & Date.

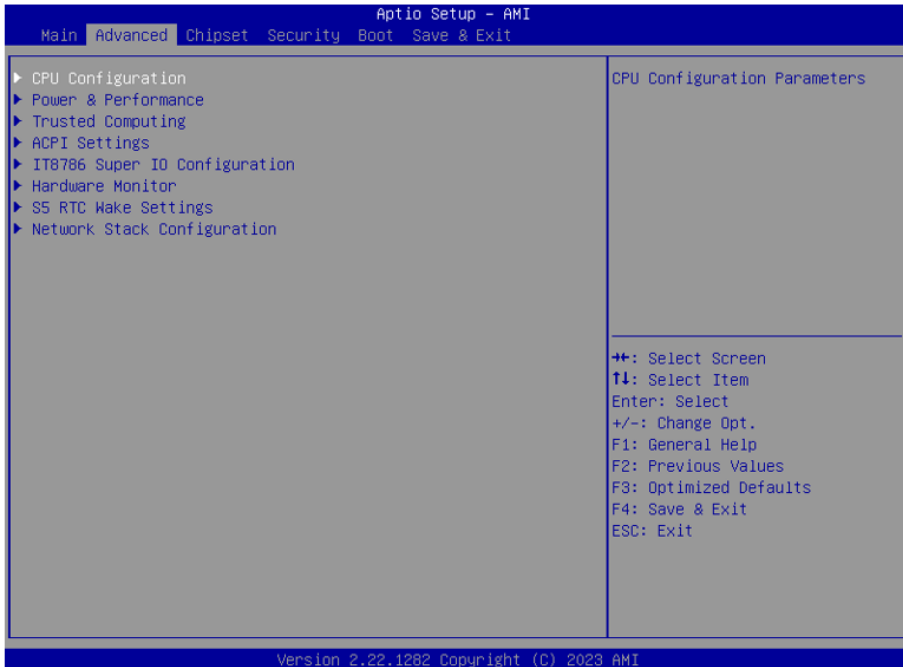
The **Main** menu features the settings of **System Date** and **System Time** and displays some BIOS info.



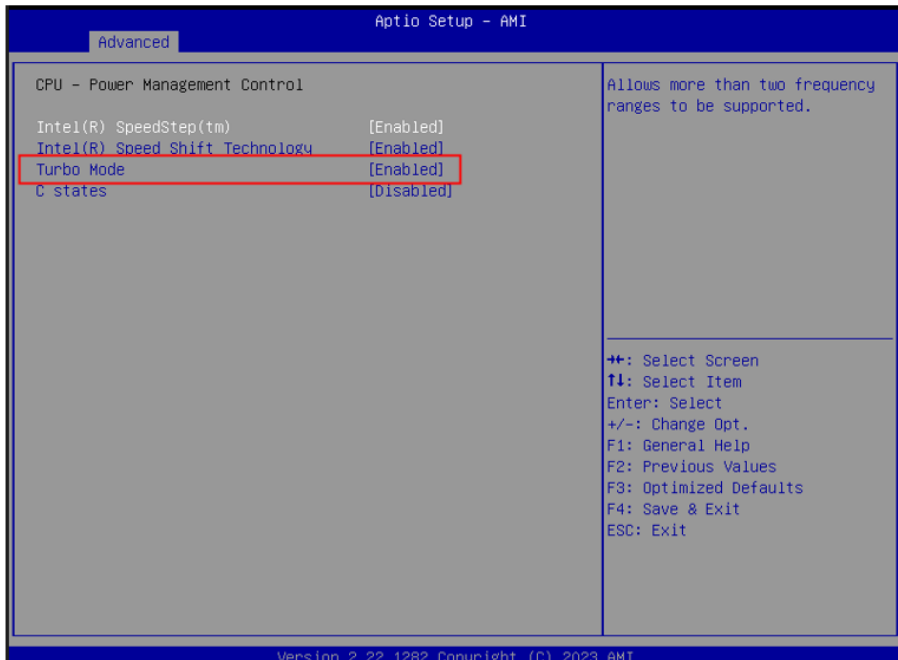
Note: Actual model name and board information varies according to your model.

Setting	Description
System Date	Sets system date.
System Time	Sets system time.

4.2. Advanced

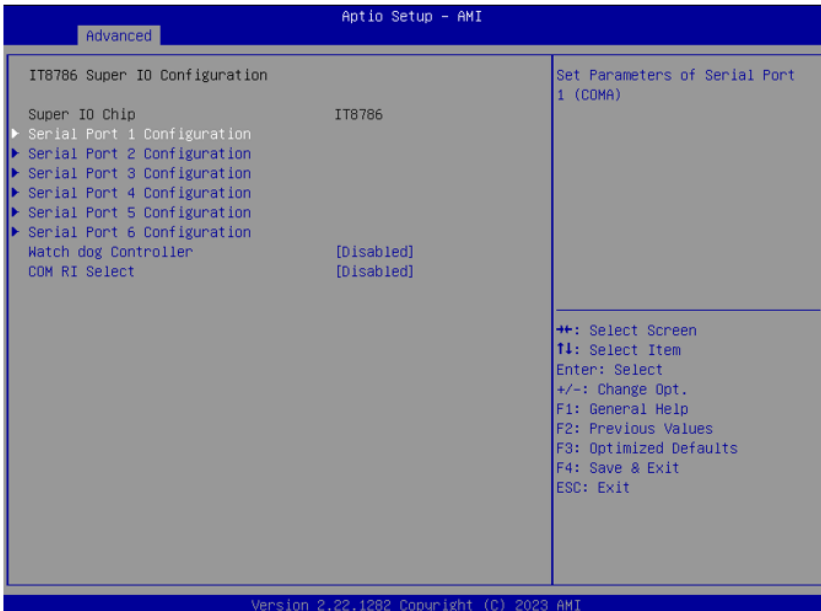
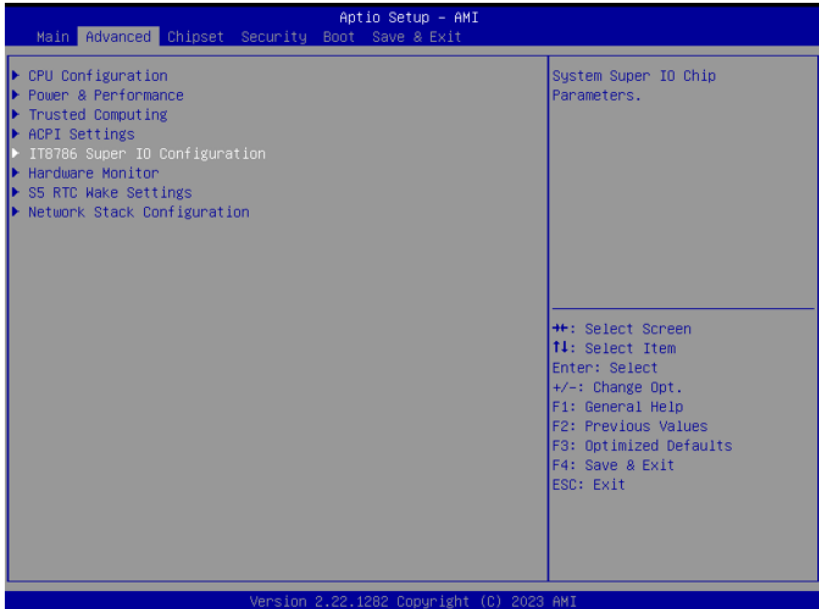


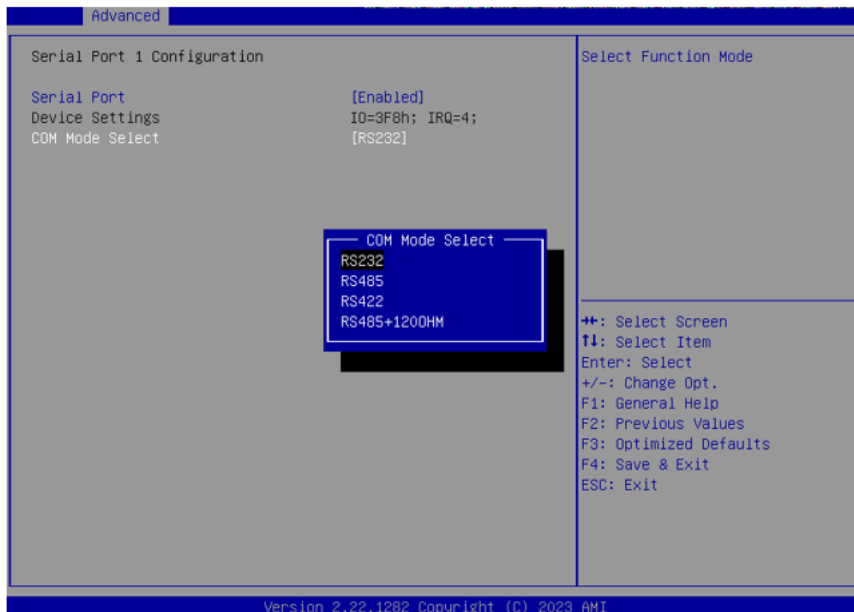
4.2.1. Turbo Mode Setting



Enter Advanced menu, select **"Power & Performance"** -> **"CPU-Power Management Control"** -> **"Turbo Mode"**. After that users can choose Enabled/Disabled. After setting, press F4 to save and exit, the system will take effect after reboot.

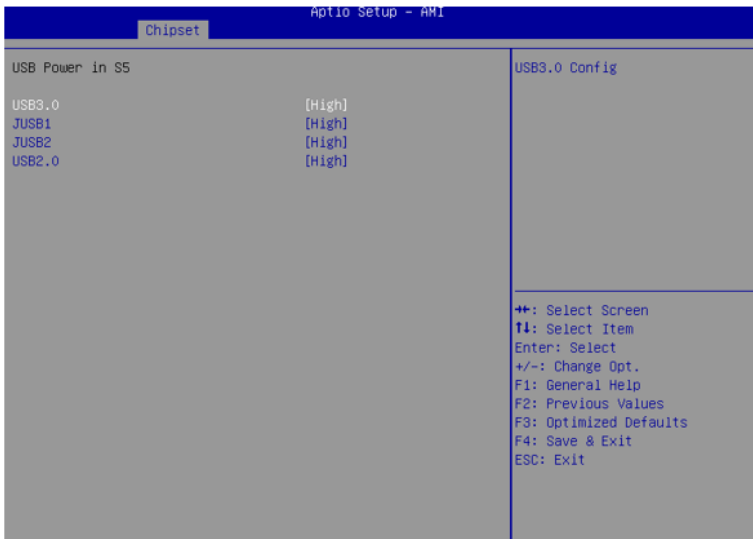
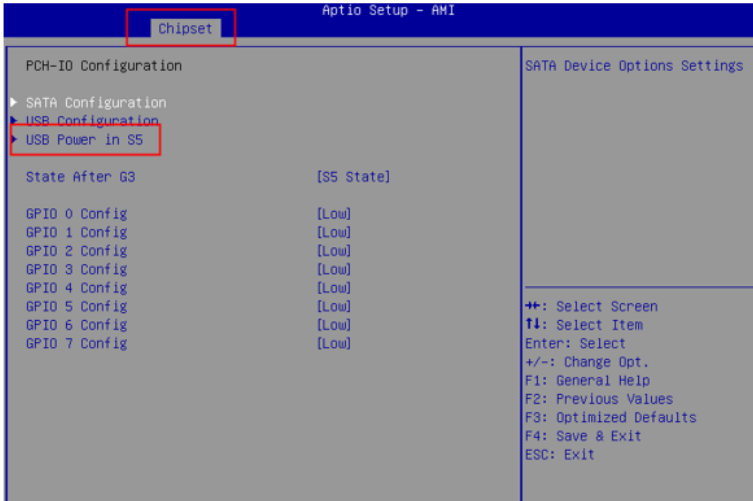
4.2.2. COM Mode Setting





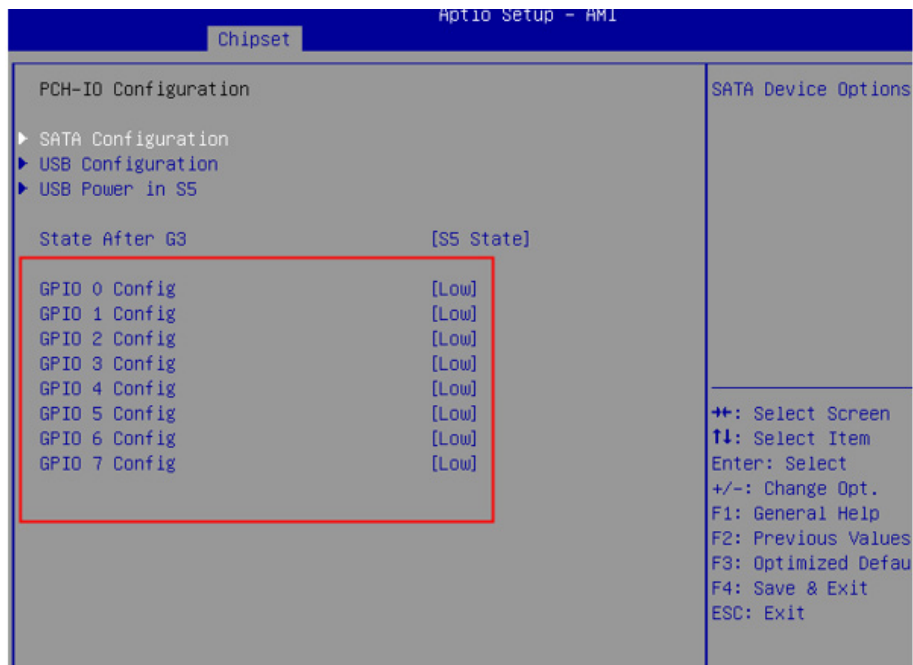
Enter the Advanced menu, select IT8786 Super IO Configuration->Serial Port X Configuration->COM Mode Select, you can choose RS232, RS422, RS485 to set the COM mode. After the setting is completed, press F4 to save and exit. The setting will take effect after the system restarts.

4.3 USB Power Setting in Power Off / Hibernation Mode



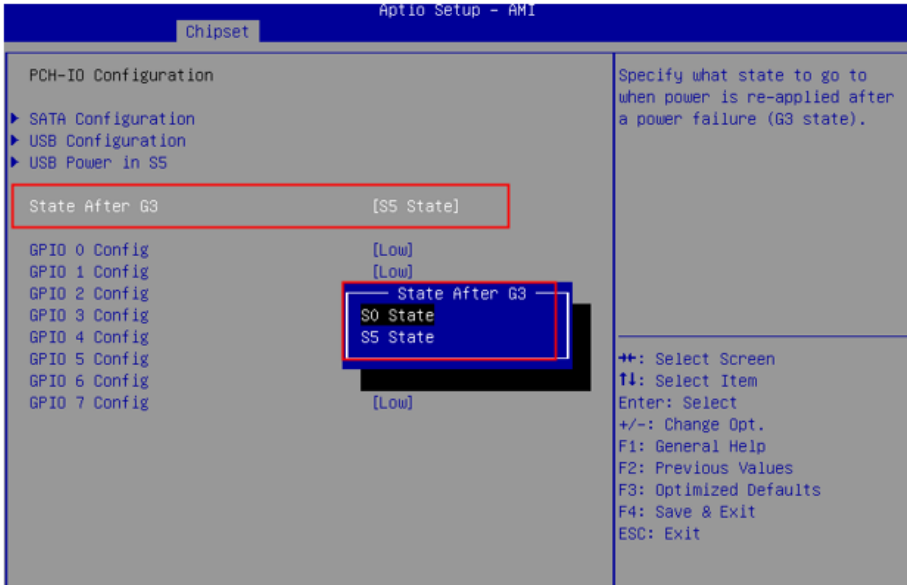
Select "**Chipset**" menu->"**PCH-IO Configuration**"-> "**USB Power in S5**" in order. Users can set the USB power in S5 according to the actual application's requirements and select High or Low to turn it on or off. After setting, press F4 to save and exit, the system will take effect after reboot.

4.4. GPIO Setting



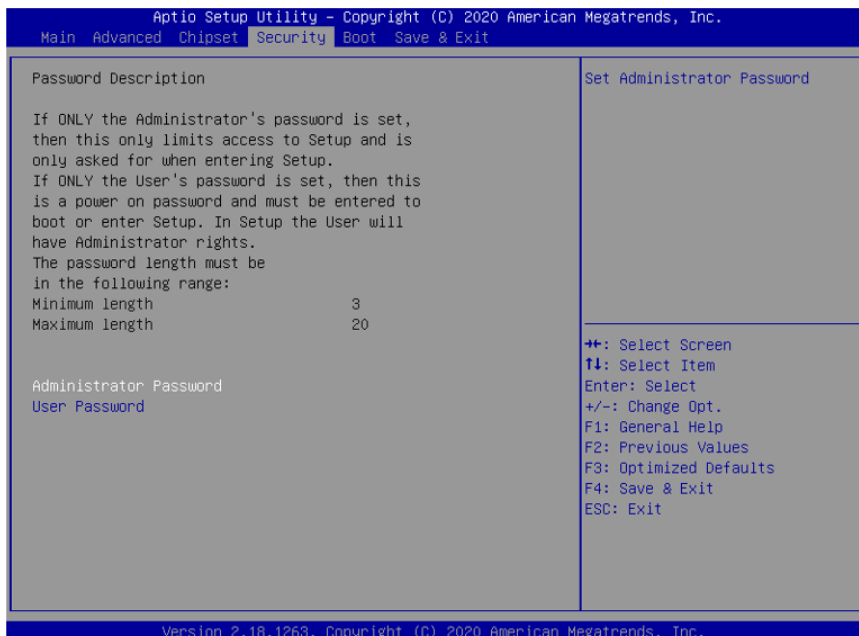
Select "**Chipset**" -> "**PCH-IO Configuration**", and select "**Enable**". Users can set a single GPIO pin as "**GPI**" or "**GPO-High**" or "**GPO-Low**". After setting, press F4 to save and exit, the system will take effect after reboot.

4.5. Auto TURN-ON (AT/ATX)



Enter "Chipset" menu, and select "Chipset"->"PCH-IO Configuration"->"State After G3" in order. Users can select "S0 State/S5 State" for power mode on the system. "S0 State" is AT mode, it will power on the system automatically after connecting the power supply, and S5 State is ATX mode. Users need to press the power button to turn on the system after connecting the power supply. **S5 State** is ATX mode. After connecting the power supply, you need to press the power button to power up the device. After setting, press F4 to save and exit, the system will take effect after reboot.

4.6. Security



Setting	Description
Administration Password	<p>To set up an administrator password:</p> <ol style="list-style-type: none"> 1. Select Administrator Password. 2. An Create New Password dialog then pops up onscreen. 3. Enter your desired password that is no less than 3 characters and no more than 20 characters. 4. Hit [Enter] key to submit.
User Password	<p>To set up an administrator password:</p> <ol style="list-style-type: none"> 1. Select User Password. 2. An Create New Password dialog then pops up onscreen. 3. Enter your desired password that is no less than 3 characters and no more than 20 characters. 4. Hit [Enter] key to submit.

Note: Users can select Administrator Password and User Password to set the administrator password and user password respectively, the minimum length is 3 digits, the maximum length is 20 digits.

4.7. Boot



"**Boot**" menu contains the boot settings above. Users can set the boot logo or select the bootup devices, etc.

4.8. Setting the Boot Logo

Enter the **Boot** menu, select **Quiet Boot**, and then press F4 to save and exit, the system will take effect after reboot.

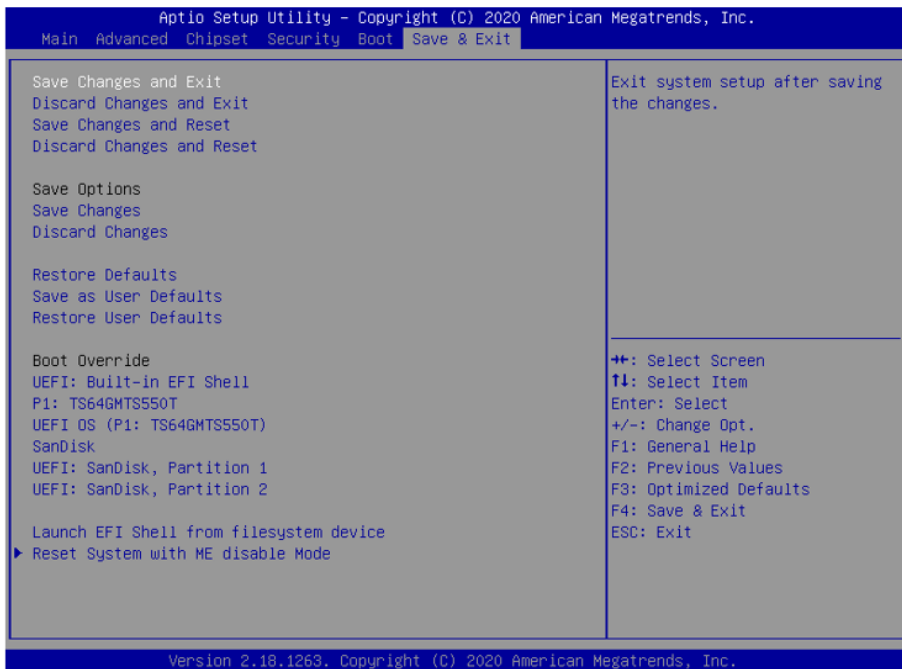
Setting	Description
Quiet Boot	<ul style="list-style-type: none"><li data-bbox="306 432 734 456">▶ Enabled: Logo will be displayed at boot up.<li data-bbox="306 464 986 512">▶ Disabled: Boot up the system and display the self-test screen, no logo, white label interface.

4.9. Setting Boot Option Priority

Set the system boot priorities.

Enter **Boot** menu. In "**Boot Option Priorities**", users can set the order of boot devices. Boot Option #1 is the first priority boot item, Boot Option #2 is the second boot item, and so on. Press F4 to save and exit, the system will take effect after reboot.

4.10. Save & Exit



The Save & Exit menu displays the way to exit the BIOS setup utility. When users have completed the setup, users must save and exit for the changes to take effect.

Setting	Description
Save Changes and Exit	Saves the changes and quits the BIOS Setup utility.