

ARBOR Technology 2024 investor briefing

Eric Lee

CEO

Dec. 2024

Agenda

- ▶ **ARBOR Group Intro**
- ▶ **2024 Q3 Financial Report**
- ▶ **2024 Growth Momentum**
- ▶ **AI Solution Introduce**
- ▶ **2025 Projection & Strategy**
- ▶ **Q&A**

ARBOR Group



Focus on industrial IoT solutions-Making Industry Connected, AI on the Edge

ARBOR is a global leader in industrial IoT, rugged mobility, and edge AI computing.

We provide comprehensive system integration, customer-centric design services, embedded systems, automation products, and global logistics support. Together with our partners, we develop complete solutions for a wide variety of applications across an array of industries.

Our mission is to enable an intelligent future by providing mobility and embedded computing devices that drive smarter, more efficient operations.

Our Story

1993
ARBOR

Founded in 1993, provides one-stop service (design /produce/client service).

1990s

Listed on Taiwan stock market : 3594



2013

2013
AMobile
Powered by **MEDIATEK**

Establish AMobile with MediaTek

Founded ACloud



2014

2017



World's first 3-in-1 explosion proof handheld device



7 Taiwan Excellence Awards



2019



Professional Nursing Terminal wins Taiwan Excellence Award

2020



1st Rugged 5G Industrial Handheld Device



2021

2022



Strategic Alliance with Ennoconn

Become a certified supplier in TRA, government IoT plan



2022

2023



TIOTA New chairman – Eric Lee

Strategic Supplier with Siemens Healthineers Healthcare Projects



2024

· Our innovative AI transportation solution, FPC-5211, has been successfully adopted by European customers.
· Achieved ISO/IEC 27001 certification

2020s

Growth momentum – Greylag Geese Travel Thousands of Miles

Our strategic alliance has provided the growth momentum to reach new heights



3Q24 Financial Report

3Q24 Financial Result					
Unit:NT\$ Thoursand	3Q2023	2Q2024	3Q2024	QoQ	YoY
Revenues	385,518	360,308	364,678	1.21%	-5.41%
Gross Profit	113,488	96,899	108,073	11.53%	-4.77%
Gross Margin%	29.4%	26.9%	29.6%	2.74ppt	0.2ppt
Operating Expenses	-97,170	-92,516	-97,707	5.61%	0.55%
Operating Profit	16,318	4,383	10,366	136.50%	-36.48%
Operating Profit Margin%	4.2%	1.2%	2.8%	1.6ppt	-1.4ppt
Interest income/(expense), net	1,887	4,287	259		
Exchange gain/(loss), net	29,895	12,681	-8,267		
Other income/(expense)	-4,284	15,772	9,029		
Tax Expenses	-9,370	1,380	-786	-156.96%	-91.61%
Net Income (Loss)	34,446	38,503	10,601	-72.47%	-69.22%
Net Income (Loss) to Parent	34,950	39,050	10,954	-71.95%	-68.66%
EPS(NT\$)	0.37	0.41	0.12	-70.88%	-67.57%

2024 the first third quarters Financial Report

2024 Q1~Q3Financial Result			
Unit:NT\$ Thoursand	2023Q1~Q3	2024Q1~Q3	YoY
Revenues	1,207,354	988,439	-18.13%
Gross Profit	400,952	286,919	-28.44%
Gross Margin%	33.2%	29.0%	-4.2ppt
Operating Expenses	-298,182	-277,399	
Operating Profit	102,770	9,520	-90.74%
Operating Profit Margin%	8.5%	1.0%	-7.5ppt
Interest income/(expense), net	-1,383	6,472	
Exchange gain/(loss), net	42,869	41,793	
Other income/(expense)	10,860	16,714	
Tax Expenses	-30,573	-8,165	-73.29%
Net Income (Loss)	124,543	66,334	-46.74%
Net Income (Loss) to Parent	122,431	67,806	-44.62%
EPS(NT\$)	1.30	0.72	-44.62%

ARBOR 2024 the first three Quarters : Product allocation

	Year	FY2023	FY2024
		Q1~Q3	Q1~Q3
Allocated			
Industrial 4.0		49%	50%
In-vehicle Computing		25%	24%
Medical Computing		11%	12%
Retail Automation		6%	9%
Video Broadcasting		6%	2%
Military Computing		3%	3%
Total		100%	100%

Growth Momentum Planning And Execution

- ▶ **Kaohsiung branch established**
 - **Remote I/O Module**
- ▶ **Established Anasis Tech Ltd.**
 - **New Energy IoT Dept. (Microgrid and Energy IoT)**
- ▶ **Establish LLMOPS that can efficiently cater to the specific requirements of clients from different sectors.**

Growth Momentum Planning And Execution

- ▶ **Strategic alliance with Ennoconn**
 - **Cost optimization & business opportunities**
 - **Overseas channel cooperation**
 - **Jointly develop differentiated products for IIoT**

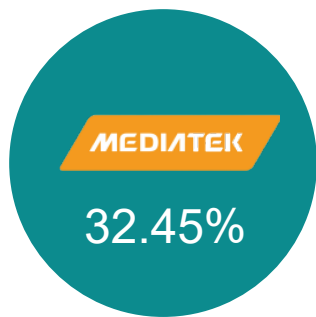
Strategic Alliance with Ennoconn



Making Industry Connected



AMobile Intelligent Corp.



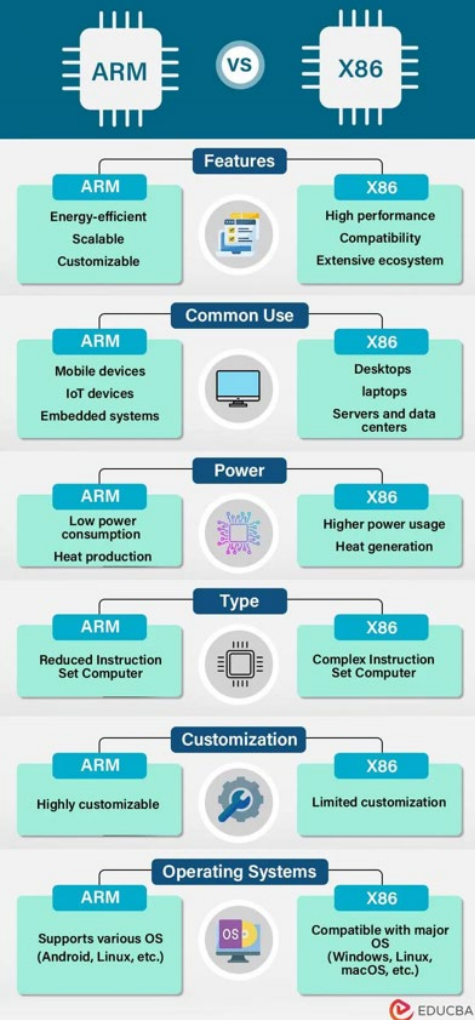
+



Authorized capital	NTD \$200 million
Staff count	165
R&D	88
R&D personnel ratio	53.33%

Growth Momentum Planning And Execution

- ▶ **Strategic alliance with MediaTek**
 - Machine Vision
 - Fitness Equipment
 - Edge AI Module
 - LLM+DaVinci
 - Integrate MediaTek Smart Cam + AIoT + Wi-Fi + 5G technologies and solutions, Used in medical, security, health care, logistics, electric power, access control, payment and other fields



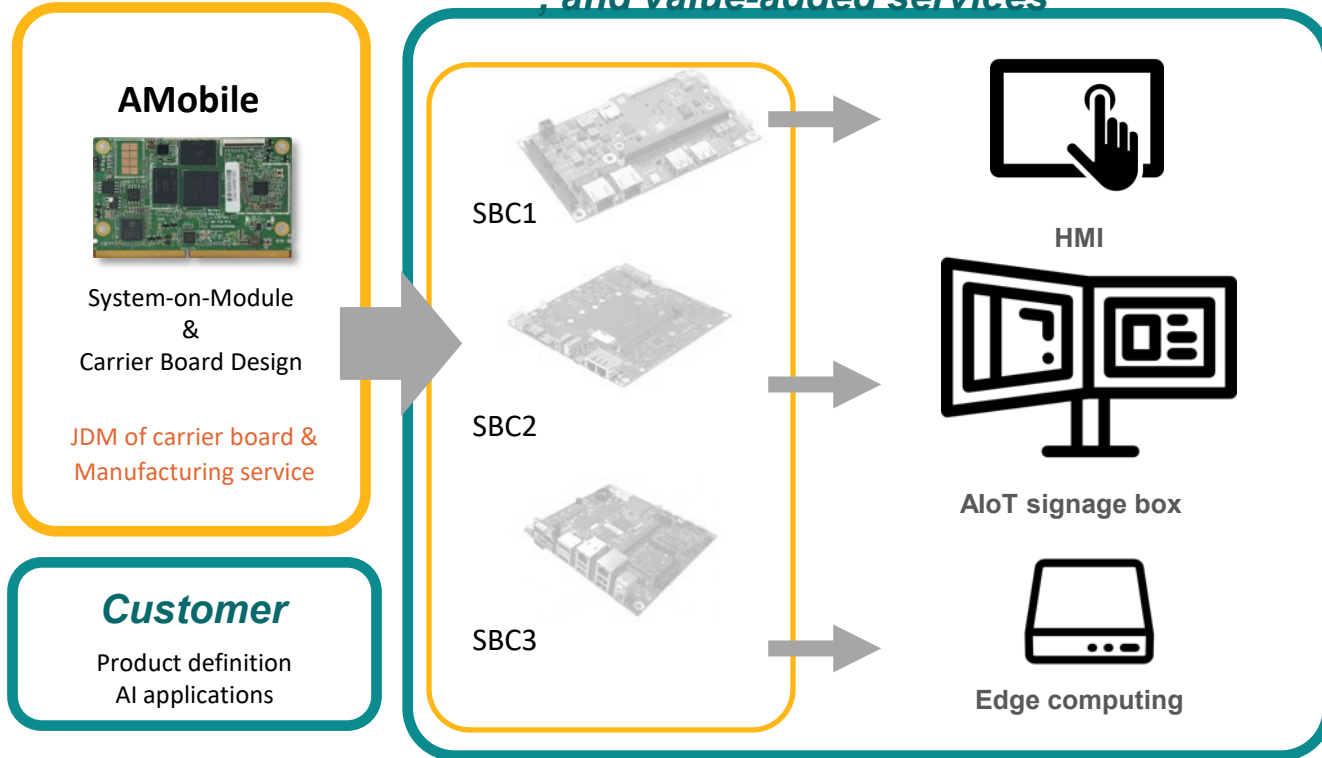
ARM—MediaTek—AMobile

- ▶ **Pain Point! SoC upgrade-OS upgrade- Drivers development - Wireless communication certification - Development timeline - Authorization**
- ▶ **Building Connected Industry with ARM, Making Industry Connected**
 1. Streamlined hardware architecture enhances overall market competitiveness
 2. Diversify product applications in the IPC industry by integrating both x86 and ARM architectures.
 3. Edge AI computing performance is boosted by heterogeneous computing
- ▶ **External R&D resources from Taiwan**
 1. Time saving: A professional team designs the main core platform
 2. Effort-saving: Modular design shortens product development time
 3. Peace of mind: ARM + Android and Linux system development experience
- ▶ **SoC 10 Years Supply**
- ▶ **Android OS support Policy**
 - 3 Android Upgrade* with Vendor Freeze
 - 3-year Security Patch after Last Upgrade
- ▶ **Linux/Ubuntu single source for G510 & G700**
 - Linux: v23.2
 - Ubuntu: v22.04

Business Model

AMobile : SoM Provider

Customer: Carrier board, system design, and value-added services



Application (ARBOR)



Energy IoT Solution

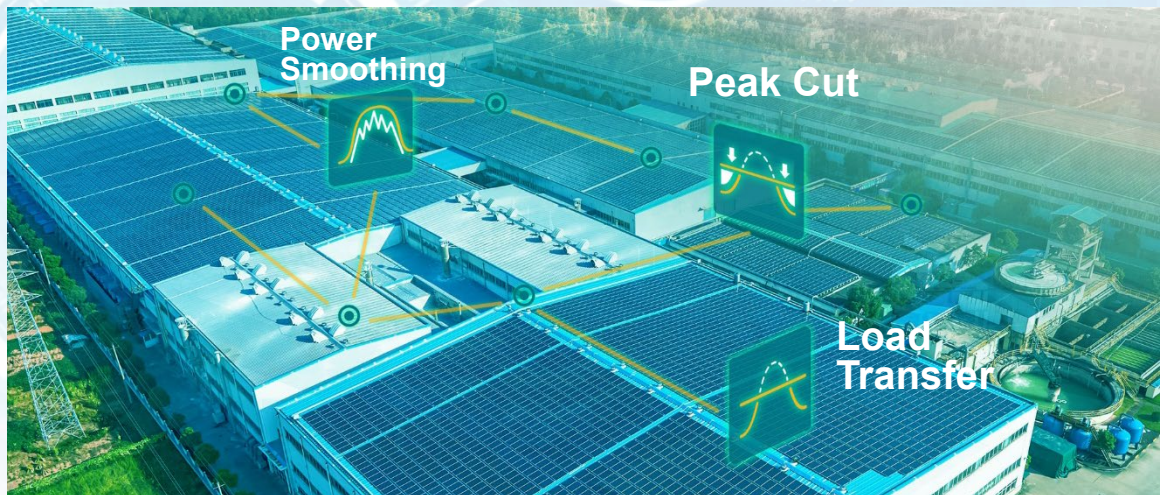
Global Energy Transition Trends

intel partner Gold



New Intel 14th

ARBOR-EMS-GC



Powerful Hardware Platform



Reliable Wireless Communication



Industrial Comm. Protocols



On-Site Data Processing



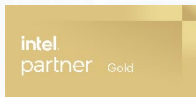
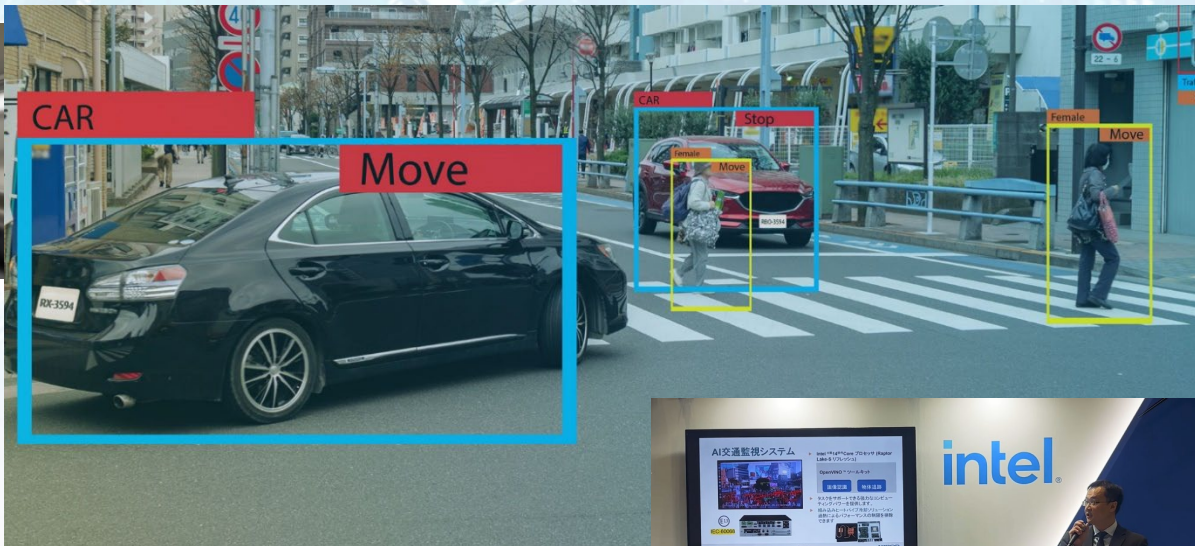
RESTful API for Data Management



Integration with Azure/AWS Cloud

Intelligent Transportation Solution

Global AI Smart City Trends



FPC-5211

New
Intel 14th



60W GPU
MXM
MXM Module
Expansion



Heat Pipes
Cooling



TPM 2.0



M.2



E13
E-Mark



Invited to speak at
Intel Booth

Machine Vision AI Recognition Technology

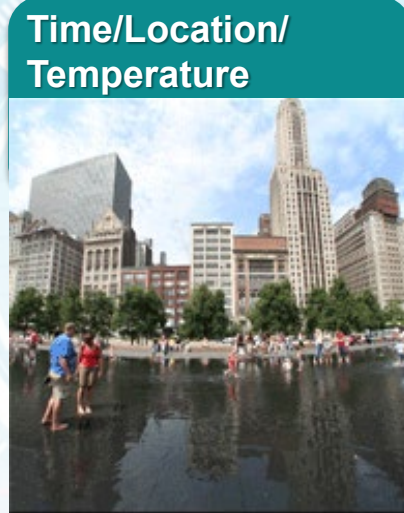
Cutting-edge Technologies that Leverage AI Recognition Capabilities

- ▶ Lower power consumption – Exclusive technology reduces overall system power consumption
- ▶ Higher-speed identification – High-speed imaging technology paired with AI., high-speed moving objects can be identified.
- ▶ More information – Under the same environment, more information can be captured to facilitate AI recognition and use.
- ▶ Application: High-speed machine vision, production lines, AGVs



Applying for Technology Patent

Smart Access Control(MTK) – Information



Data in Picture

Dewarp image combined with fisheye lens, data of sensors (ex Temp. Humidity, Time), With AI recognition results, environmental scene information can be output in each frame



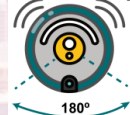
5M~8M camera



AI face or other objects recognition



DeWarp



135°~180° fisheye camera



Save high quality output low quality



AI noise cancellation or suppression



Mobile APP remote switch



Wired or wireless private network transmission

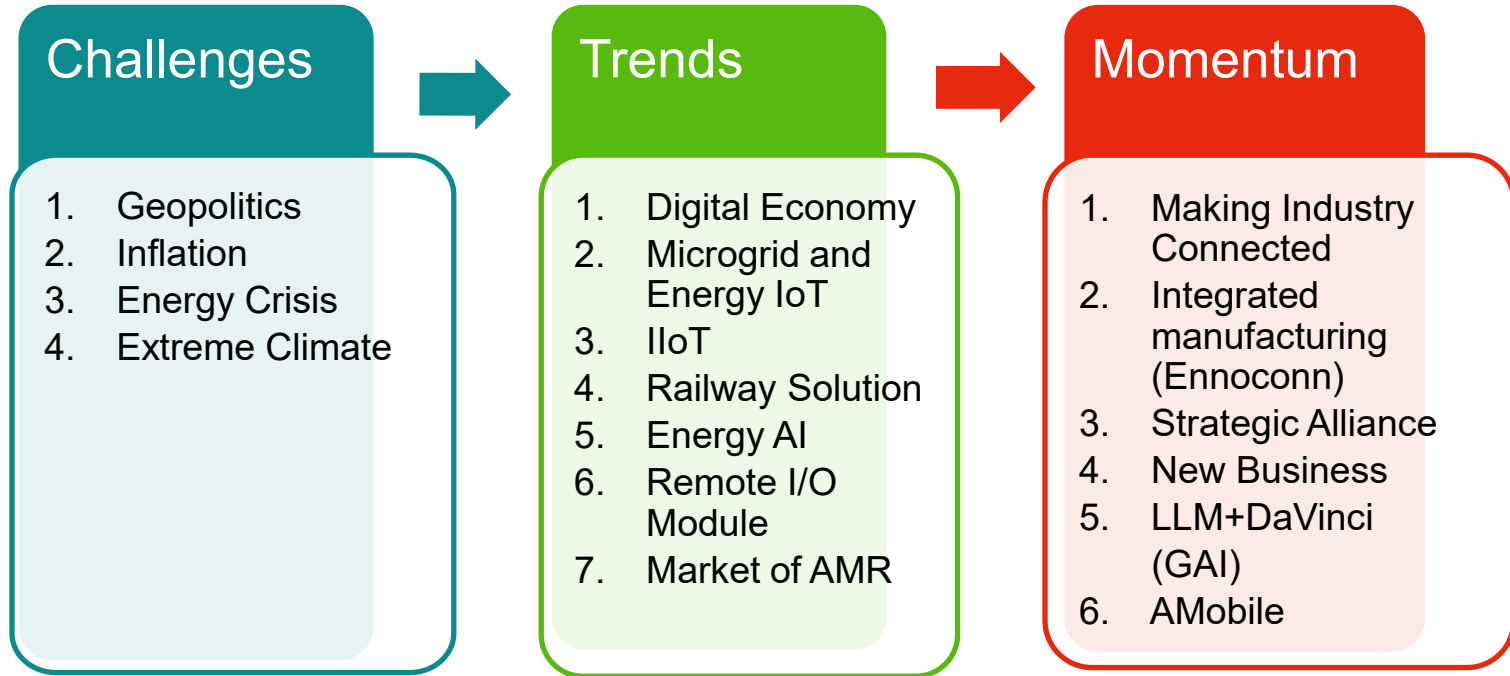


Vignette monitoring



liveness detection

ARBOR Sustainable Development and Transformation



Integrate The IIoT Eco System & Business Model

AIoT + Software and Hardware Integration + Eco-system

Industry application : ESG + IS+ SaaS + IoV + Medical + Logistic + Automation

Industry Product : Edge AI + GAI + Machine Vision + LLM

ARBOR
磐儀科技

- SPA
- Optical Lab
- Multi-Channels
- AIoT R&D
- Edge AI

MEDIA TEK

- Communication
- Machine Vision
- AI
- DaVinci (GAI)
- Chipset EVK
520 EVK, 720 EVK,
8300, 9300

Innoconn
An Innovative Foxconn Subsidiary

- Costs optimization
- Differentiated products & agents
- Laboratory
- Customer service
- Design sharing

ARBOR 2025 Projection & Strategy

By leveraging MediaTek's advanced technologies and Ennoconn's manufacturing scale, we have been able to create products that are both innovative and cost-effective.

Committed to integrating hardware and software in microgrid and energy storage, machine vision, and access control systems.

Edge AI products are well-positioned to capitalize on the growing edge computing market. By leveraging DaVinci and integrating with NVIDIA's TAO Toolkit, we are accelerating development and driving market-focused AIoT solutions.

Thank You

